



Association de Sauvegarde du
CHATEAU DE GAVRAY



Association de Sauvegarde du
CHATEAU DE GAVRAY



The history of medieval Normandy

Era of the Norman Dukes (933-1204) :

Built around 1040, the site was fortified for the first time by Henri I Beaulerc, son of William the Conqueror at the end of the 11th century.

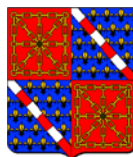


Royal area (1204-1354) :

In 1204 Normandy was captured by Philippe-Auguste. The castle would have been an important fortress because it was one of live Norman castles retaining a commander appointed in 1290.

Navarrian Era (1354-1380) :

In the 14th Century the castle belonged to the King of Navarre, Charles the Bad. In 1378 the castle was taken following a difficult siege, by the French, led by Du Guesclin. It was razed to the ground in 1390 by order of the King of France.



Hundred Years War (1337-1450) :

In 1417 the castle was taken by the English who rebuilt it. In 1449 it was again besieged by the French led by Arthur de Richemont, Constable of France. After the Hundreds Years War it accommodated a garrison until the start of the 15th Century when it was demolished.

In the twentieth Century :

In 1980 the site was practically inaccessible, when the Association to save the castle decided to undertake some archaeological excavations. In 2001 the site of the castle ruins was highlighted by explanatory signs thanks European funding.

In the XXI century:

In 2015, the Association carries out a course commented in 3 languages with the help of Manche Numérique and under the auspices of the Community of Communes of Coutances basin.



Association's address:
Mairie de Gavray 50450 Gavray
Contact : 06 74 62 70 00
website : www.chateaugavray.fr

Facebook : www.facebook.com/chateaugavray
Bureau d'information touristique : 02 33 50 10 10
tourisme@gavray.net



Come and discover the site of Duke castle in Gavray 1000 years of history



Visits

Come visit what was, according to one of the most important chroniclers of medieval times, Jean FROISSART, « *the best Chastel of Normandy in the middle of the fourteenth century* » and « *stunning of-arms assault, artillery of any and all devices* » in a chronicle of the first four Valois published by Siméon Luce.

Always free and free tours.
Guided tours on request in summer.
Groups welcome.

Discover the KIT-M discovery tour of the castle of Gavray.

Fourteen site commentaries will allow you to explore the history of the castle and its principal surviving remains.

Don't forget to download the KIT-M app on your tablet or smartphone at Coutances Tourist Office or at the Tourist Information Office in Gavray.

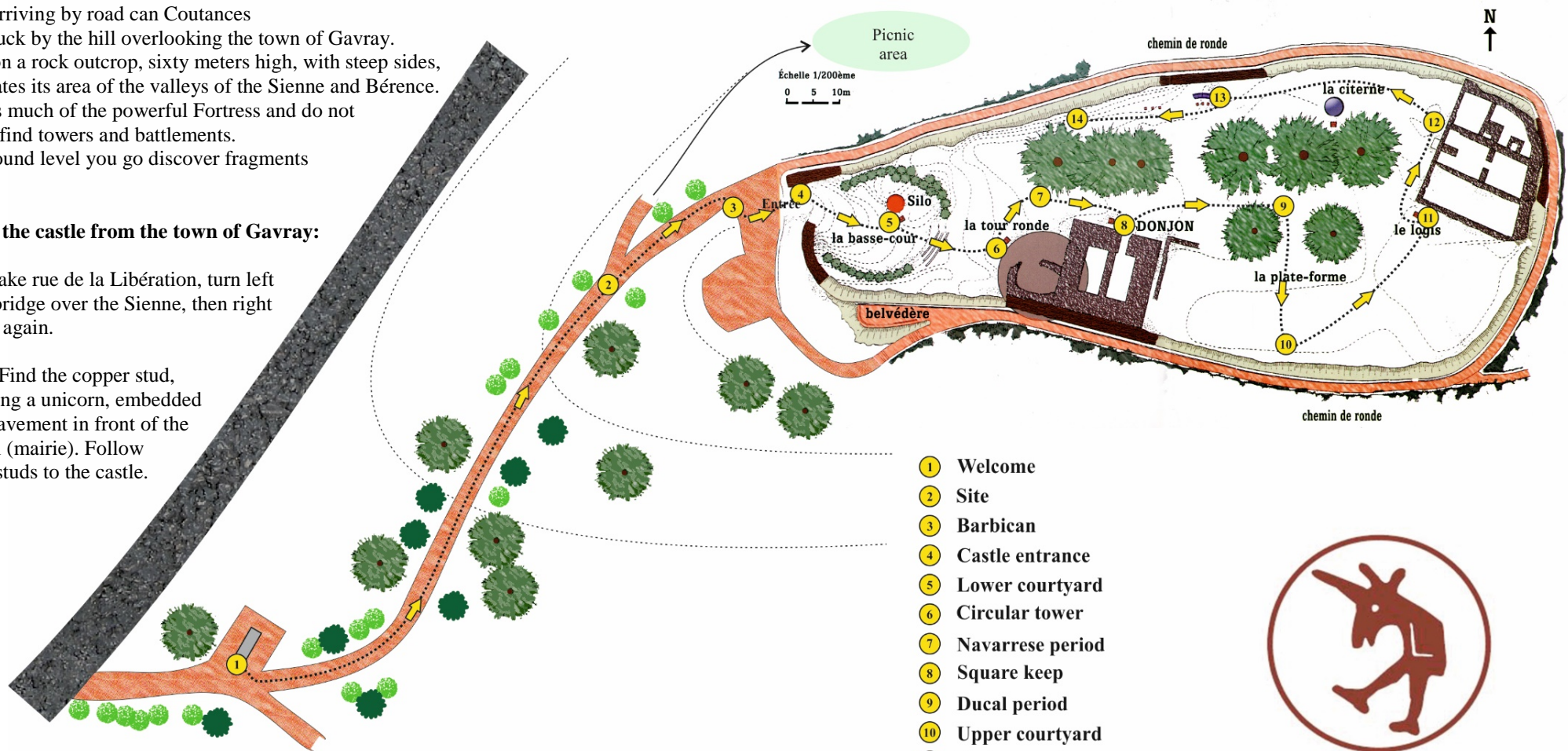
Plan of the KIT-M site discovery tour

Visitors arriving by road can see Coutances but be struck by the hill overlooking the town of Gavray. Perched on a rock outcrop, sixty meters high, with steep sides, it dominates its area of the valleys of the Sienne and Bérence. It remains much of the powerful Fortress and do not expect to find towers and battlements. It is at ground level you go discover fragments of walls.

To get to the castle from the town of Gavray:

-**by car**: take rue de la Libération, turn left after the bridge over the Sienne, then right and right again.

-**on foot**: Find the copper stud, representing a unicorn, embedded into the pavement in front of the town hall (mairie). Follow identical studs to the castle.



- ① Welcome
- ② Site
- ③ Barbican
- ④ Castle entrance
- ⑤ Lower courtyard
- ⑥ Circular tower
- ⑦ Navarrese period
- ⑧ Square keep
- ⑨ Ducal period
- ⑩ Upper courtyard
- ⑪ Living quarters
- ⑫ French period
- ⑬ Panorama
- ⑭ English period

.....➔..... Route



Association de Sauvegarde
du château de Gavray

Amenities :

Car park for cars and camper vans. Picnic area is available half way up the hill.